

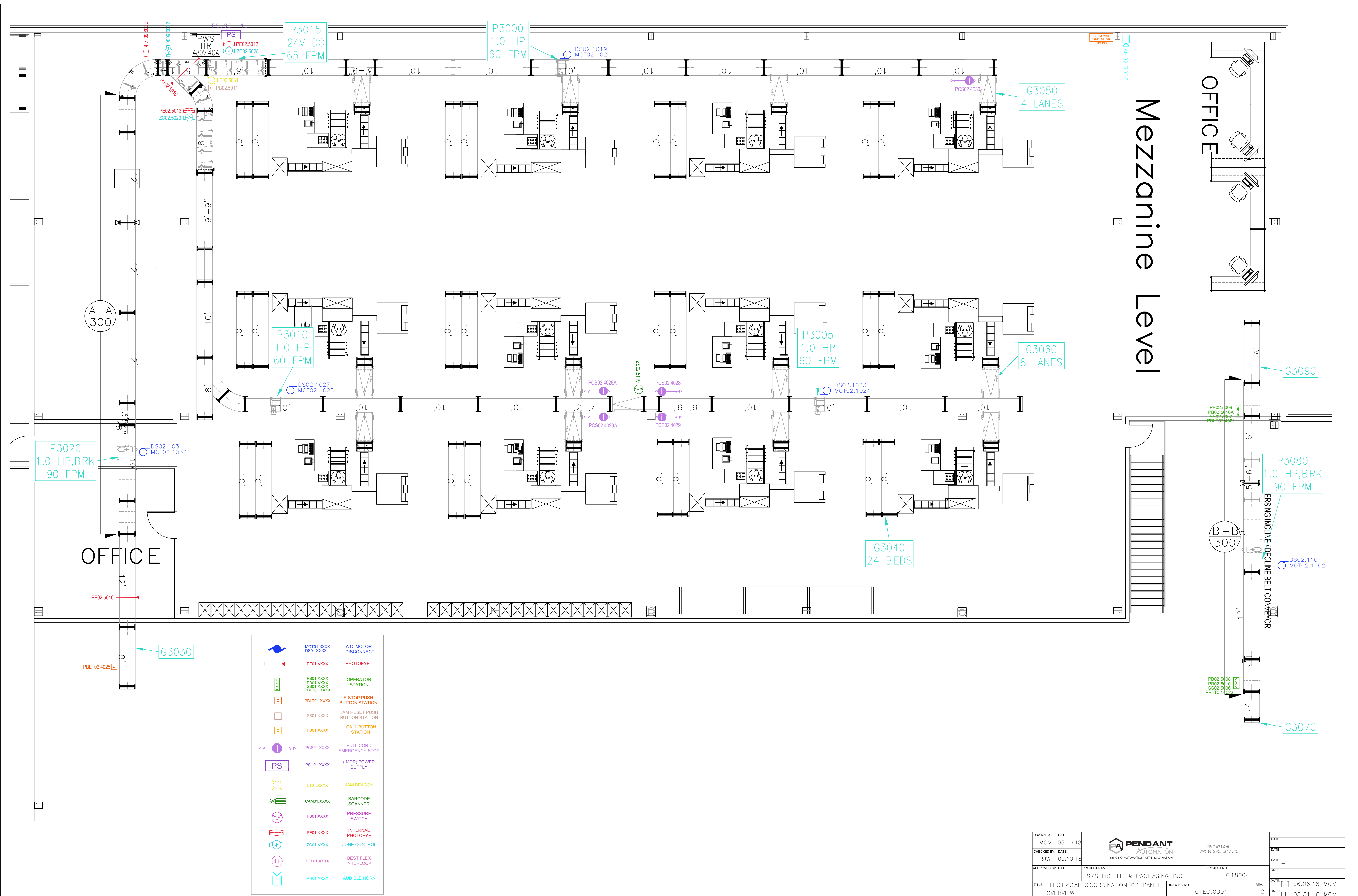


02 ELECTRICAL COORDINATION DRAWINGS FOR:

SKS BOTTLE & PACKAGING INC
 PICK AND PASS CONTROL PANEL

ISSUED FOR: FIELD INSTALLATION

REV.	DATE:	DRAWN BY:	DESCRIPTION:	REV.	DATE:	DRAWN BY:	DESCRIPTION:
-	-	-	-	-	-	-	-
-	-	-	-	-	-	-	-
2	06.06.2018	MCV	ADDED 4 FEET TO MERGE FEED SECTION	-	-	-	-
1	05.31.2018	MCV	CONVEYOR RELOCATED	-	-	-	-
0	05.09.2018	MCV	FIELD INSTALLATION	-	-	-	-



	MOT1.XXXX DS01.XXXX	A.C. MOTOR DISCONNECT
	PE01.XXXX	PHOTOEYE
	PB01.XXXX PB01.XXXX SB01.XXXX PBLT01.XXXX	OPERATOR STATION
	PBLT01.XXXX	E-STOP PUSH BUTTON STATION
	PB01.XXXX	JAM RESET PUSH BUTTON STATION
	PB01.XXXX	CALL BUTTON STATION
	PCS01.XXXX	PULL CORD EMERGENCY STOP
	PSU01.XXXX	(MDR) POWER SUPPLY
	LT01.XXXX	JAM BEACON
	CAM01.XXXX	BARCODE SCANNER
	PS01.XXXX	PRESSURE SWITCH
	PE01.XXXX	INTERNAL PHOTOEYE
	ZC01.XXXX	ZONE CONTROL
	BFL01.XXXX	BEST FLEX INTERLOCK
	AH01.XXXX	AUDIBLE HORN

DRAWN BY: MCV	DATE: 05.10.18	 SKS BOTTLE & PACKAGING INC SYNCING AUTOMATION WITH IMAGINATION	DATE: --
CHECKED BY: RJW	DATE: 05.10.18		DATE: --
APPROVED BY:	DATE:	PROJECT NO: C18004	DATE: --
TITLE: ELECTRICAL COORDINATION 02 PANEL OVERVIEW		DRAWING NO: 01EC.0001	REV: 2
		DATE: [2] 06.06.18 MCV	DATE: [1] 05.31.18 MCV